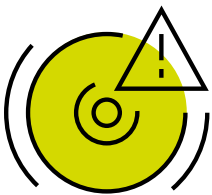


INCAMPUS OPENING

The stations of the tour

The incampus is a modern technology park with a variety of uses. You can get an impression of this at these stations:



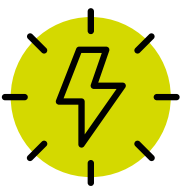
Vehicle safety center

The largest building on the incampus site is the new vehicle safety center. It houses, among other things, intersecting run-up lanes for crash tests, a dummy laboratory, a „flying floor“ for side impact tests, a sled track, and a movable 100-ton crash block.



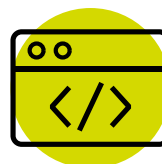
Data center

Audi's new data center is directly adjacent to the vehicle safety center. Housed on a floor covering an area of almost 10,000 square meters, it supports AUDI AG's future projects with state-of-the-art hardware and software. Around 800 servers and data cabinets are housed in the IT space boasting 2,400 square meters of space.



Energy center

The energy center controls the modular energy concept of incampus. Waste heat from buildings such as the data center is used elsewhere for heating. Water collected from the groundwater protection system is reused to cool or heat the buildings utilizing heat exchangers. Surplus heating and cooling energy is channeled into thermal energy storage. A smart Cross-Energy Concept manages the interaction of all technical components. A photovoltaic system on the center's green roof already provides green electricity.



CARIAD

The four structures of the so-called project house northwest of the incampus house are the premises of CARIAD, the software company in the Volkswagen Group. At CARIAD's largest site, over 2,000 employees work on developing the digital driving experience, automated driving, tech platforms, and cloud services, among other things.